

PAVILION MEDICAL CENTER

320 East Fontanero Street, Colorado Springs, CO 80907



Lease Rate:
Starting at \$15 –
16.25/RSF, NNN



Parking:
4.5/1,000 RSF



Tenant Improvements:
Negotiable



Expenses:
\$8.50 PSF (est.
2019)



RSF Available:
7,816



Building SF:
46,588

AVAILABLE SPACE

Suite 101	5,561 RSF
Suite 103	925 RSF
Suite 105	1,330 RSF

OVERVIEW

Pavilion Medical Center is a prime, second generation medical building located in the Greater Central Business District of Colorado Springs. The building is conveniently located close to Penrose and Memorial Hospital. The property is ideal for specialty and primary care practices, as well as dental groups and general office needs.

Pavilion Medical Center has easy access to extensive on-site parking and nearby public transportation. Shooks Run Trail passes through the center of the property, providing a park-like setting and easy access to the extensive urban trail system in Colorado Springs.



For Leasing Information:
Tammy Thorvilson
719 368 8800 | 720 371 5421
tammy@ecovest.co | ecovest.co

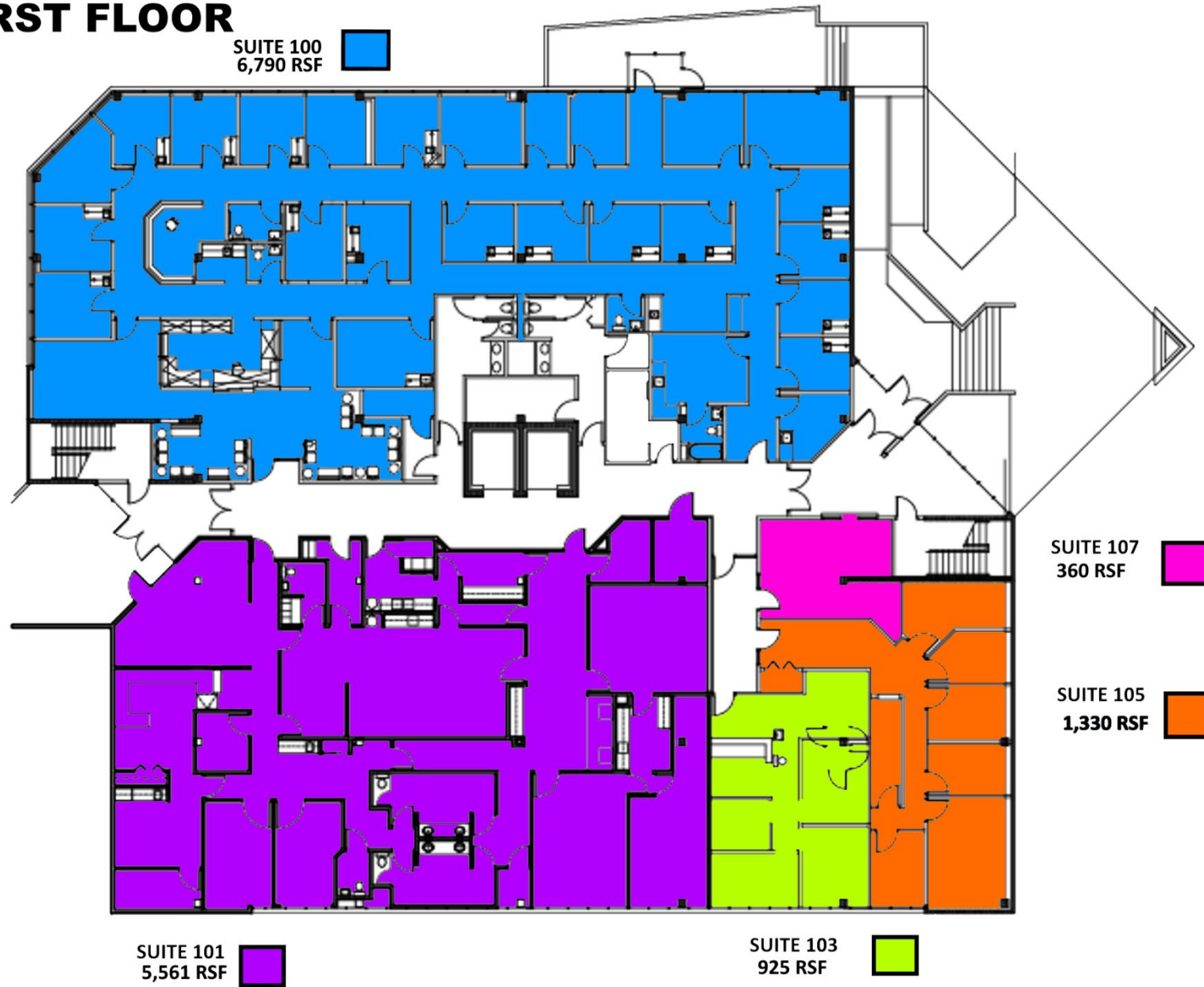
BUILDING FEATURES & AMENITIES

- Easy access to a high ratio of on-site parking
- Elevator access
- On-site porter services
- Park-like setting provided by Shooks Run Trail, bisecting the property
- Monument and building signage availability
- Expansive window lines providing natural light and beautiful mountain views
- Conveniently located half a mile from Penrose Hospital
- Quick occupancy on suites in good condition
- Ideally located near retail, restaurants, hotels and hospitals
- Secure keying and electronic access points
- Day porter services 5 days a week, coverage 6am – 2:30pm



For Leasing Information:
Tammy Thorvilson
719 368 8800 | 720 371 5421
tammy@ecovest.co | ecovest.co

FIRST FLOOR

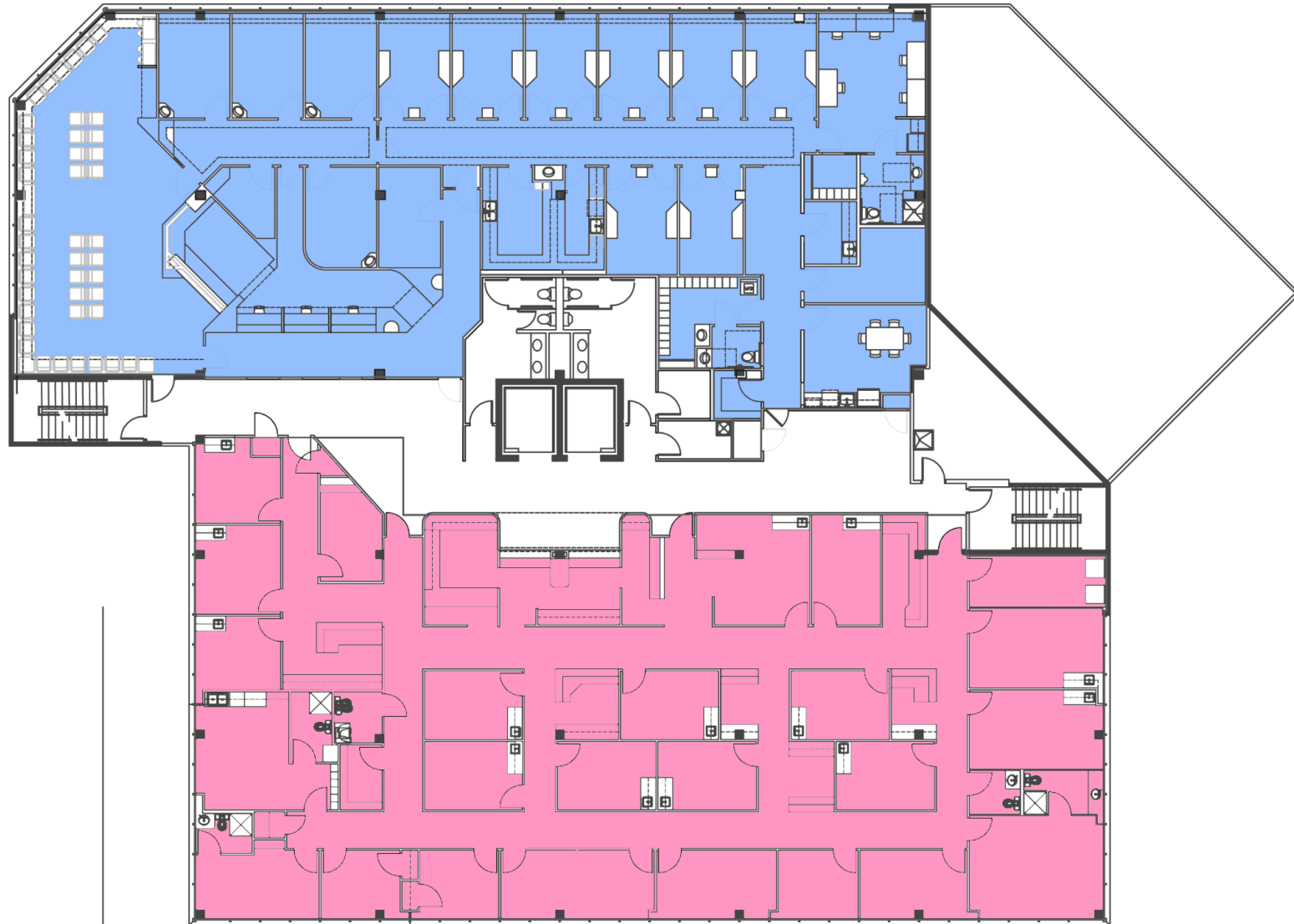


Property: Pavilion Medical Center
Address: 320 E. Fontanero St., Colorado Springs, CO 80907

For leasing information, please call or email Tammy Thorvilson
tammy@ecovest.co -or- (720) 371-5421

SECOND FLOOR

SUITE 200
6,746 RSF = 



SUITE 201
7,807 RSF = 



Property: Pavilion Medical Center
Address: 320 E. Fontanero St., Colorado Springs, CO 80907

For leasing information, please call or email Tammy Thorvilson
tammy@ecovest.co -or- (720) 371-5421

THIRD FLOOR

SUITE 308
4,402 RSF = 

SUITE
302
2,510
RSF
=



SUITE 307
1,542 RSF = 

SUITE 301
3,336 RSF = 

SUITE 303
1,406 RSF = 

SUITE 305
1,280 RSF = 



Property: Pavilion Medical Center
Address: 320 E. Fontanero St., Colorado Springs, CO 80907

For leasing information, please call or email Tammy Thorvilson
tammy@ecovest.co -or- (720) 371-5421